



INSTALLATION MANUAL

SK-5640

**Arnott New Rear Left Shock
Land Rover Range Rover Velar
(L560 Chassis, w/Adaptive & Air or Coil Suspension)**



Engineered to Ride, Built to Last®

CONGRATULATIONS ON YOUR PURCHASE OF AN ARNOTT® SUSPENSION PRODUCT

WE AT ARNOTT LLC ARE PROUD TO OFFER A HIGH QUALITY PRODUCT WITH ALL THE TECHNICAL SUPPORT YOU NEED. THANK YOU FOR YOUR CONFIDENCE IN US AND OUR PRODUCT.

Proper installation is essential to experience and appreciate the benefits of this system. Please take a moment to review these installation instructions before you begin to install these components on your vehicle. The removal and installation of air suspension products should only be performed by a fully qualified and certified automotive professional.

It is equally important to be aware of all necessary safety measures while installing your new Air Suspension System. This includes proper lifting and immobilizing of the vehicle and isolation of any stored energy to prevent personal injury or property damage.

GENERAL INFORMATION

Reading this manual signifies your agreement to the terms of the general release, waiver of liability, and hold harmless agreement, the full text of which is available at www.arnottinc.com and www.arnotteurope.com.



WARNING:

The air suspension system is under pressure (up to 10 bar, or 150 lbf/in). Verify pressure has been relieved and disconnect power to the air suspension system prior to disassembly. Do not allow dirt or grease to enter the system. Always wear standard hand, ear, and eye protection when servicing the air suspension system.

- Not to be stored below 5°F (-15°C) and above 122°F (50°C).
- Avoid damage to air lines and cables.
- Removal and installation is only to be performed by fully qualified personnel.
- Use car manufacturer's diagnostic software.

CAUTION:

Damage to the vehicle and air suspension system can be incurred if work is carried out in a manner other than specified in the instructions or in a different sequence.

To avoid the possibility of short circuits while working with electric components consult your owner's manual on how to disconnect your battery.

Consult your vehicle owner's manual, service manual, or car dealer for the correct jacking points on your vehicle and for additional care, safety and maintenance instructions. Under no circumstances should any work be completed underneath the vehicle if it is not adequately supported, as serious injuries and death can occur.

For vehicles with a "Closed Air Supply System," replacement of components requires proper adherence to procedures set forth within OE servicing literature. Failure to comply with the OE prescribed procedures can result in component damage and/or failure.

SHOCK REMOVAL

1. Lift the vehicle.
2. Remove the rear wheel. (Figure 1)



FIGURE 1

3. Remove the top mount nuts. (Figure 2)



FIGURE 2

4. Disconnect the wire harness from the top of the shock. (Figure 3)



FIGURE 3

5. Remove the bottom mount nut; leave the bolt in place for now. (Figure 4)

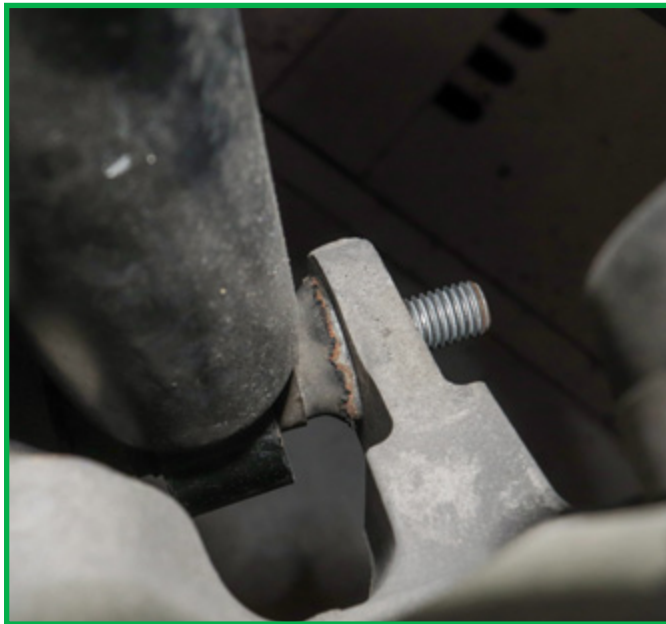


FIGURE 4

6. Slightly rotate the top to relieve tension against the studs and pull the shock forward to unmount from the studs. (Figures 5, 6)

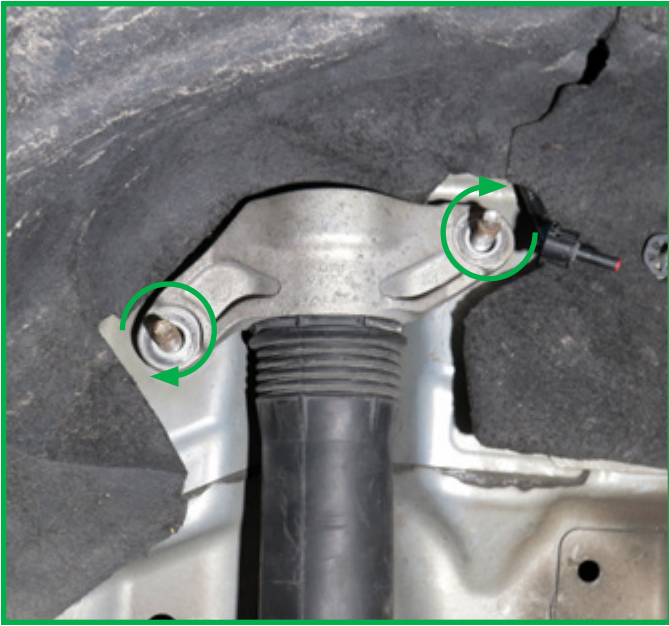


FIGURE 5

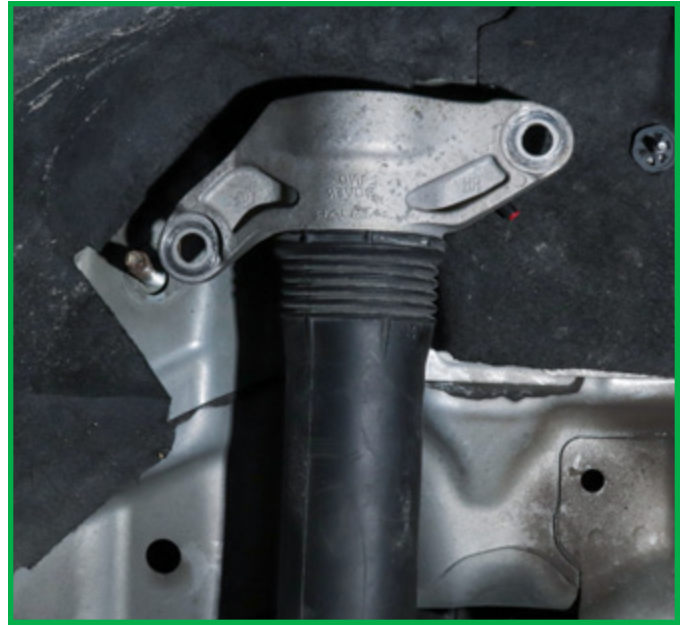


FIGURE 6

7. Remove the bottom mount bolt and remove the shock from the vehicle. (Figure 7)



FIGURE 7

8. Removal complete.

SHOCK ASSEMBLY

1. Disassemble the OE shock by removing the top nut. Pull the top mount off along with the bump-stop and the shock rod spacer. (Figure 8)



FIGURE 8

2. Place the bump-stop and shock rod spacer onto the new Arnott shock. Install the OE top mount and secure using the new provided lock nut. (Figures 9, 10)



FIGURE 9



FIGURE 10

3. Assembly complete.

SHOCK INSTALLATION



WARNING:

Tighten all nuts and bolts to manufacturer's specifications during the installation process.

1. Install the assembled Arnott shock into the vehicle. Insert the bottom mount bolt to hold the shock in place. (Figures 11, 12)

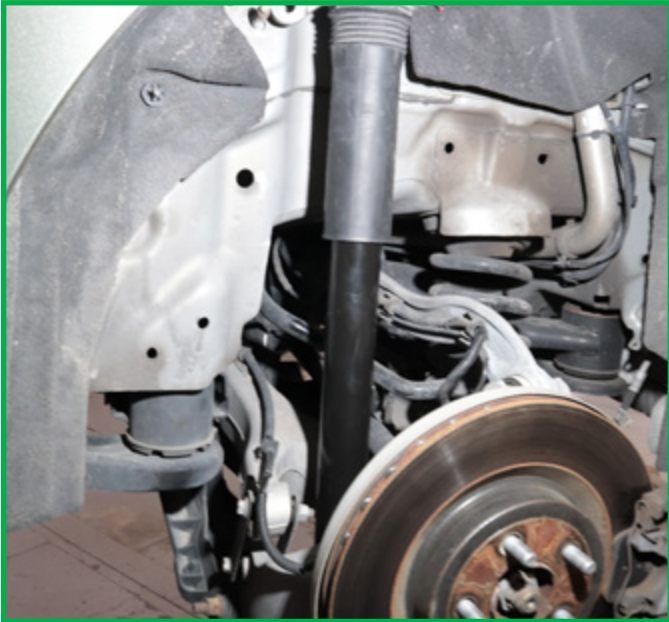


FIGURE 11



FIGURE 12

2. Seat the top mount onto the studs using the rotation method from the removal section. (Figure 13)



FIGURE 13

3. Connect the electrical connector to the provided dummy coil and place the bracket onto the stud. (Figures 14, 15)



FIGURE 14



FIGURE 15

4. Install the top mount nuts. (Figure 16)



FIGURE 16

5. Install the bottom mount nut.
6. Tighten all hardware to manufacturer's specifications.
7. Reinstall the wheel.
8. Installation complete.

Arnott®

Suspension Products

Arnott US Business Office:

www.arnottinc.com

100 Sea Ray Drive
Merritt Island, FL 32953

Call: 800.251.8993

321.868.3016

Fax: 321.868.3703

Email: techassistance@arnottinc.com

Arnott Europe Business Office:

www.arnotteurope.com

Industrieweg 19
5145 PD, Waalwijk (NL)

NL Phone: +31 73 7850 580

DE Phone: +31 85 2087 438

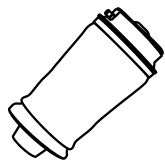
UK Phone: +44 203 3186 124

BE Phone: +32 258 846 90

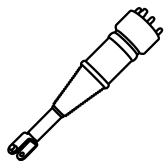
ES Phone: +34 91 901 10 56

FR Phone: +32 78 48 46 93

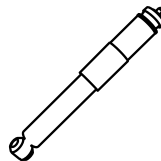
Email: info@arnotteurope.com



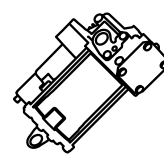
Air Springs



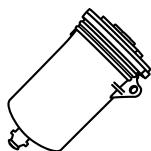
Struts



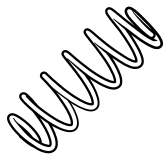
Shocks



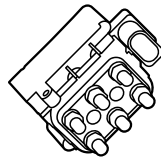
Compressors



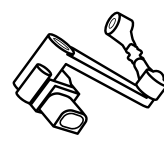
Dryers



Coil Spring
Conversion Kits



Valve Blocks



Ride Height
Sensors